

Instructions for Using the Web-Based Version of GISHydro2000
Glenn E. Moglen
(last revised July 16, 2006)

There are several things you need to know to currently use GISHydro2000 from the web. These instructions will allow you to test the web-based version, however, the details of logging in may change over the next few weeks to months.

Step 1: Obtain Login Information

Access to the GISHydro2000 web version is free, however to control access to the web site is password protected. This is done for two reasons:

1. To provide added security to the server that is supporting the web version.
2. To help us document usage of the server.

To obtain a username and login, please contact Glenn Moglen (moglen@umd.edu) and request a login to the server. You should provide the following information with your username request:

- Your full name
- Your email address
- Your company or employer
- Your phone number

Step 2: Download Plug-in

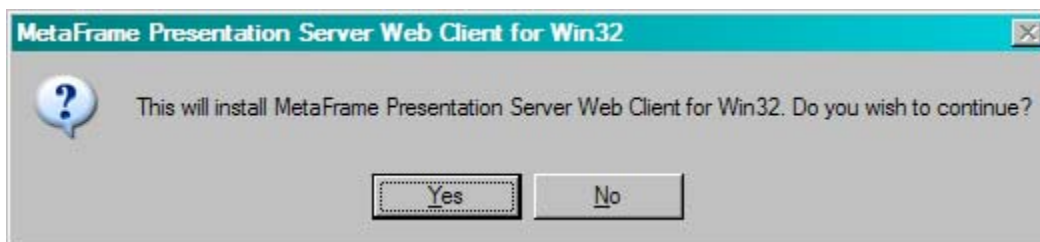
The web-based version runs by using software from Citrix. In order to use this software, it is necessary to download and install a plug-in from this company. To do this, go to:

<http://129-2-71-200.umd.edu/Citrix/MetaFrame/ICAWEB/en/ica32/ica32t.exe>

and download the file, “ica32t.exe. (There’s also a link to this at the GISHydro: Download page.)

Step 3: Install Plug-in

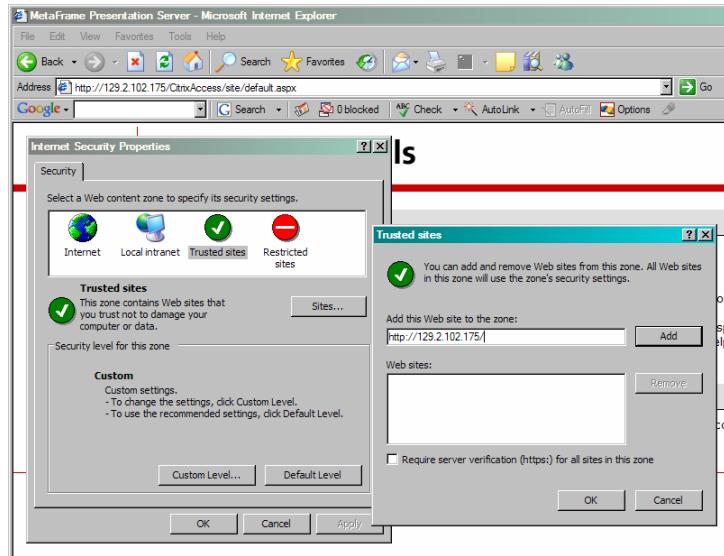
Once you have downloaded the plug-in, double click on its filename or icon and install. You should receive the following prompt window at the initiation of the installation:



Click on the “Yes” window and accept all the subsequent installation wizard boxes to complete the installation.

Step 4: Set Security in Internet Explorer

It is necessary to indicate to your computer that the server that is supporting the GISHydro2000 program is a “trusted site”. To do this, in internet explorer select: Tools: Internet Options. Click on the “Security” tab and then click on the “Trusted Sites” Icon. Then click on the “Sites” button. In the window to the left of the “Add” button, type the URL, <http://129-2-71-200.umd.edu>. Then click the “Add” button and you should see the URL for this site jump to the lower window labeled “Web Sites:”. Click the “OK” buttons to accept this site and close out the change of this internet option.



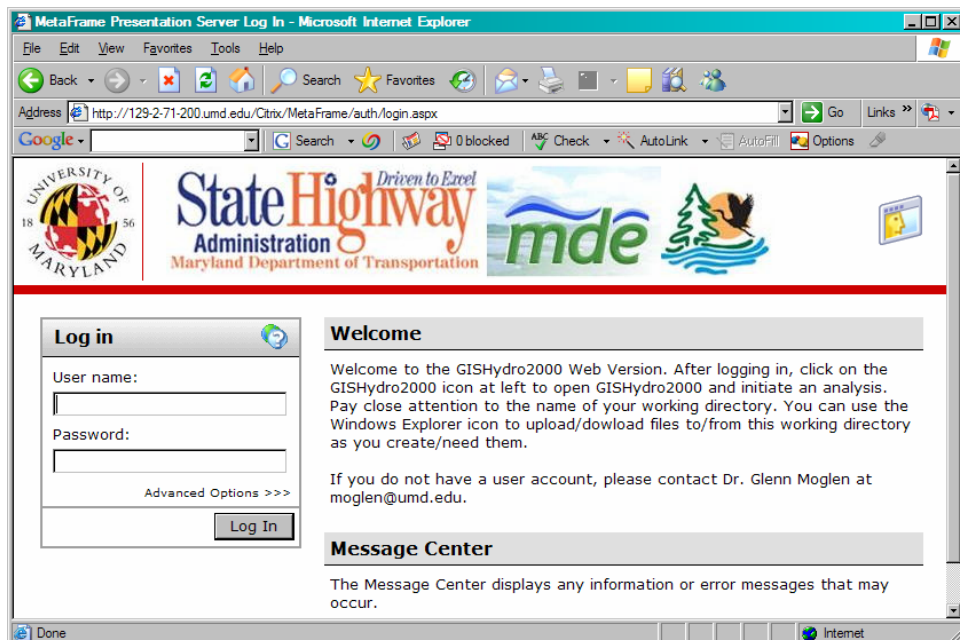
Step 5: Logging into Server

At the Internet Explorer address window, type:

<http://129-2-71-200.umd.edu>

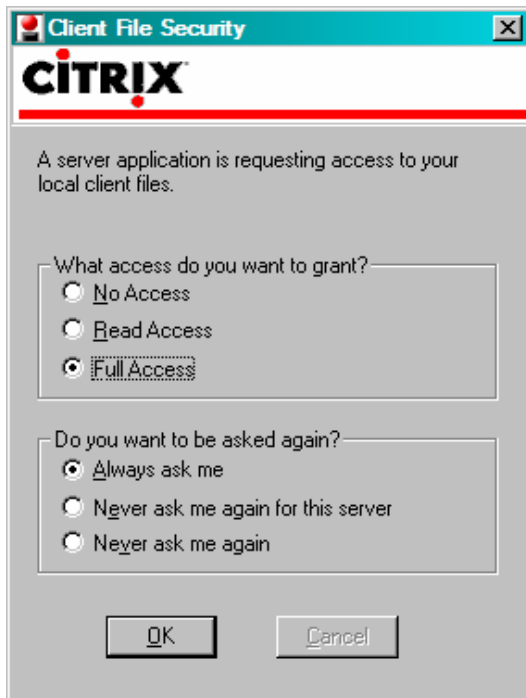
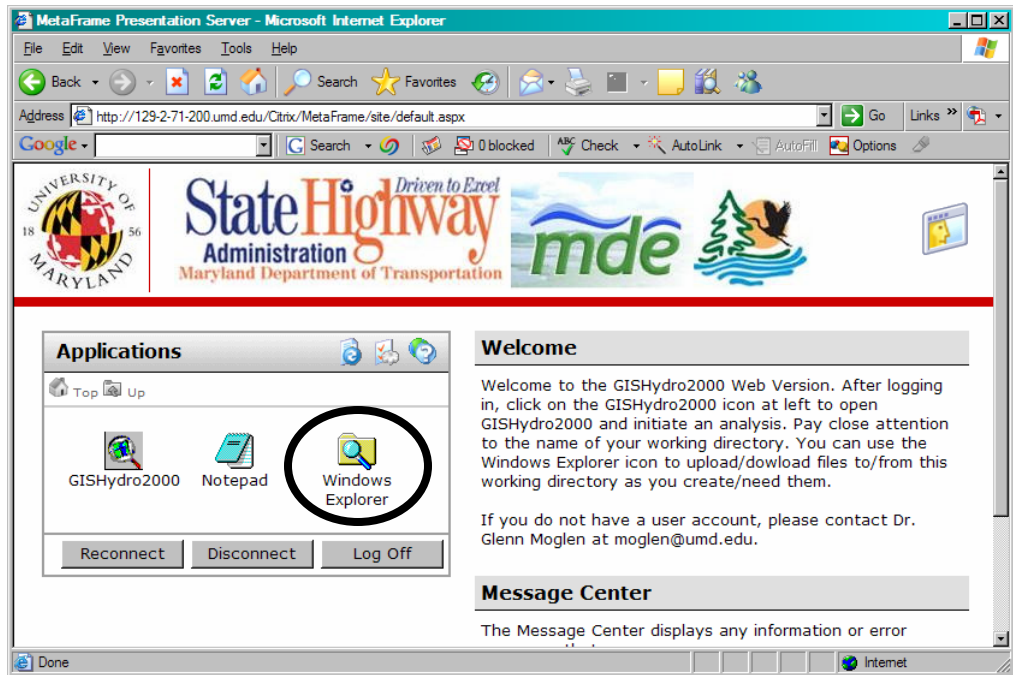
(alternatively, you can simply follow the link from the main GISHydro web page and follow the link from there.)

You will then see the browser appear as shown at right. Enter your user name and password obtained earlier in **Step 1**. Now click the “Log In” button.



Step 6: Providing Remote File Access

Click on the Windows Explorer icon (shown circled at right) to launch the windows explorer application. This will result in the shown dialog from the Citrix software. You want to choose “Full Access” to the first question. This will have the effect of mapping the drives on your local machine to the directory structure seen by

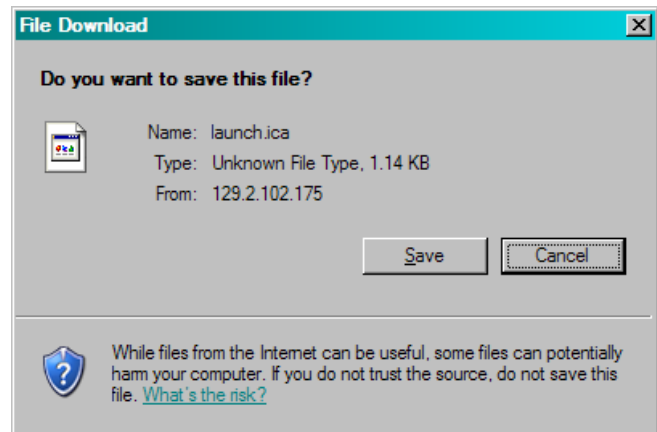
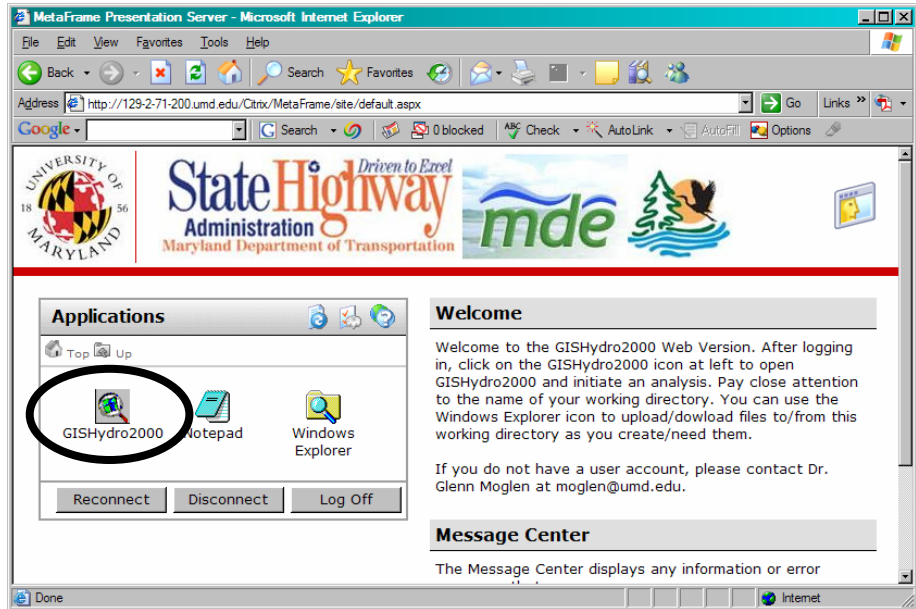


the server. The effect will be as if the local drives on your machine become available to the server. GISHydro2000 will write all files during a given session to the “e:\temp\xxxxx” directory of the server. The value of “xxxxx” is randomly assigned but you can modify it as you wish. Thus, using Windows Explorer will allow you to copy and move files to/from the e:\temp\xxxxx directory on the server to your local machine as desired. More explanation on this temporary directory is contained under **Step 8**.

Step 6: Launching GISHydro2000

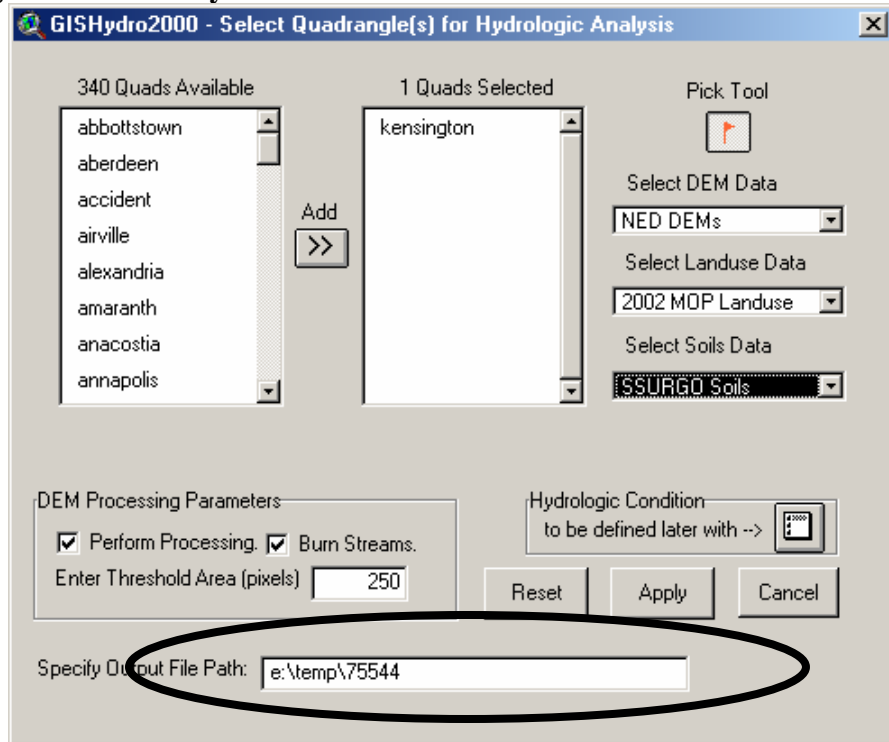
To launch GISHydro2000, simply click on the “GISHydro2000” icon (shown circled at right) and GISHydro2000 should start up. You are now logged in!

If you have not properly installed the plug in, when you click on the “GISHydro2000” icon, you will instead see the dialog box shown at right. If you get this dialog box, go back and review Steps 2 and 3 and make sure that they were done correctly and completely.



Step 8: File Management in GISHydro2000 Software

For security reasons and to keep files from different users and different projects separate, it is important to note a recent change to the GISHydro2000 software. As shown at right, the bottom part of the “Select Quads” dialog indicates the default path that GISHydro2000 has assigned for your analysis session. You may



accept (and record) this number, or you can specify a more meaningful name of your own. Just be sure to retain the “e:\temp” (changed from “c:\temp” on June 23) part and to only use letters or numbers – do not use spaces or unusual characters such as “?”, “#”, “%” etc. All files you generate in this GISHydro2000 web session will be sent to this path or to directories located deeper along this path.

Step 9: Longevity of Files in the “e:\temp” Directory

Files written to the “e:\temp” directory should be considered temporary. You must make use of the windows explorer tool to move all work to your local machine from the server. At the time of this writing, files will be deleted from the “e:\temp” directory periodically and without warning (generally files less than one week old will not be deleted unless space requirements require otherwise). It is up to you as a user to copy your work promptly and maintain your own permanent version of all created files on your own local machine.

Final Comment:

The number of persons the server can simultaneously support is 10. So, (1) please log out promptly once you’ve completed your analysis, and (2) if you are unable to log in because all 10 of the licenses are already being used, please let me know. I’d like to know how often this license limit kicks in.

That’s it! I am still working on making this web-based version of GISHydro2000 work better and I expect there may be bugs because of some recent changes to make it web-compatible. Please let me know if you encounter any problems. Thank you.